



## CITY OF CHELSEA

### City of Chelsea Architectural Control Committee Meeting Minutes September 20, 2012

Present: Dave Hughes from Vanston Obrien, Bob Mendoza from Hardwood Solutions, Matt Mason and Tammy Matow from Roberts Paint & Body, George Kinzer Chairman of the Planning Commission, Christine Linfield and Karon Barbour from the City of Chelsea.

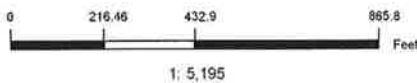
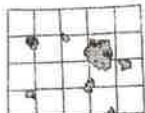
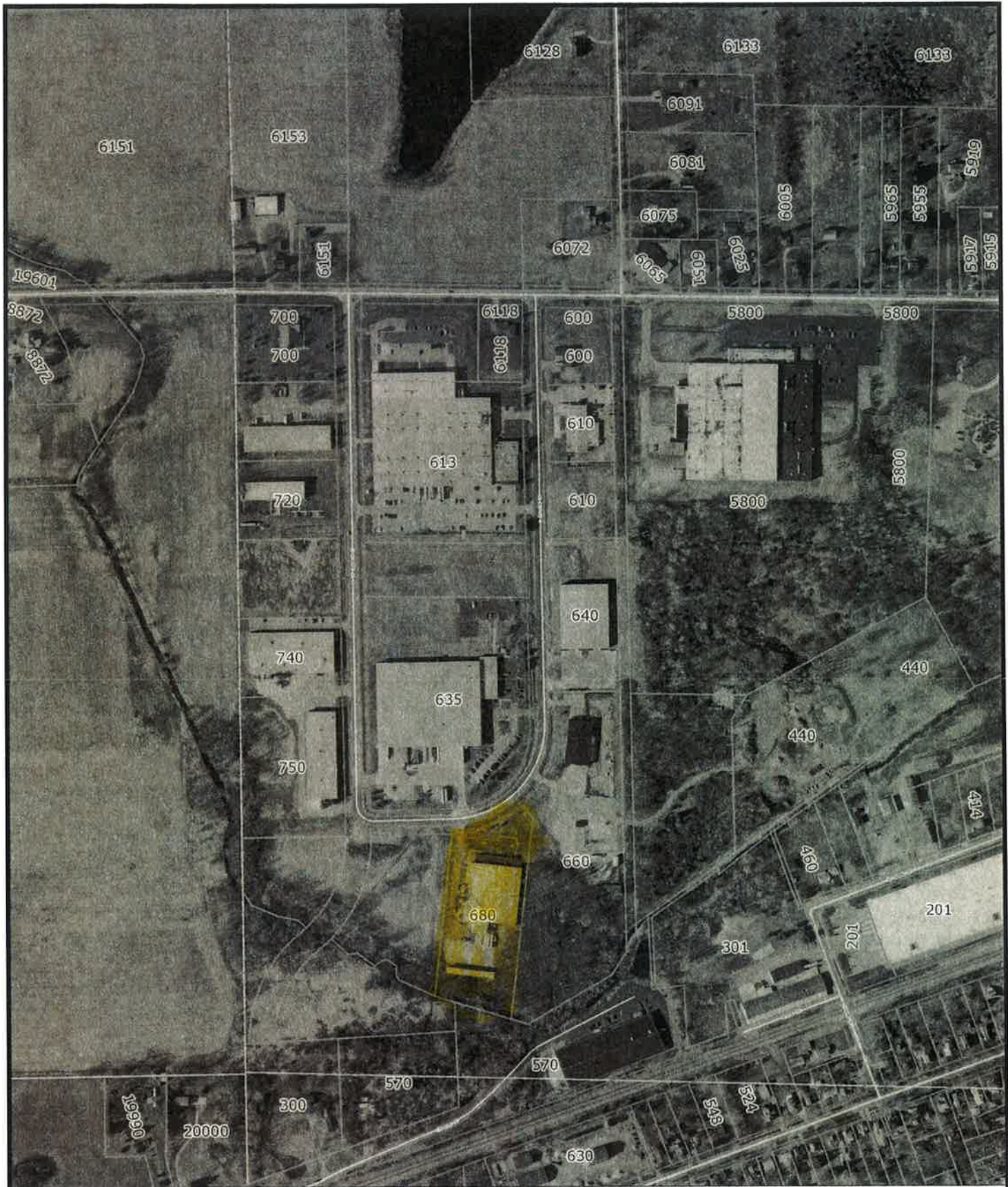
**Storage Addition to Hardwood Solutions:** Christine Linfield explained the upcoming project for those in attendance.

The applicant proposes to construct a three sided storage addition with an overhead roof in the southwest corner of the lot. The open side of the building will have a plastic canopy curtain to keep out weather. This new structure will be attached to the unit that already exists. You will not be able to see materials stored from the road.

The only comments made from the committee were in the form of a phone call received at the city office prior to the meeting from David Frame of Frame Hardwoods, who expressed support of the project.

Christine Linfield went over comments from both her report and Carl Schmult's with Dave Hughes. The building location is in a low spot and is proposed to be constructed over Hardwood Solutions private storm water sump pump. Alternatives were discussed.

If Hardwood Solutions chooses to keep the current building location they will be required to; submit a letter removing all liability from the City of Chelsea for damage to stored materials, maintain access to the pump at all times, shift pump location to avoid building support column and store materials above potential storm water elevation.



10/9/2012

THIS MAP REPRESENTS PARCELS AT THE TIME OF PRINTING. THE OFFICIAL PARCEL TAX MAPS ARE MAINTAINED SOLELY BY THE WASHTENAW COUNTY EQUALIZATION DEPARTMENT AND CAN BE OBTAINED BY CONTACTING THAT OFFICE AT 734-222-6692.



**NOTE: Parcels may not be to scale.**

The information contained in this cadastral map is used to locate, identify and inventory parcels of land in Washtenaw County for appraisal and taxing purposes only and is not to be construed as a "survey description". The information is provided with the understanding that the conclusions drawn from such information are solely the responsibility of the user. Any assumption of legal status of this data is hereby disclaimed.







